



# MONTHLY MEMBERSHIP PROGRESS REPORT

District 322C1

Results as of: 5/31/2015

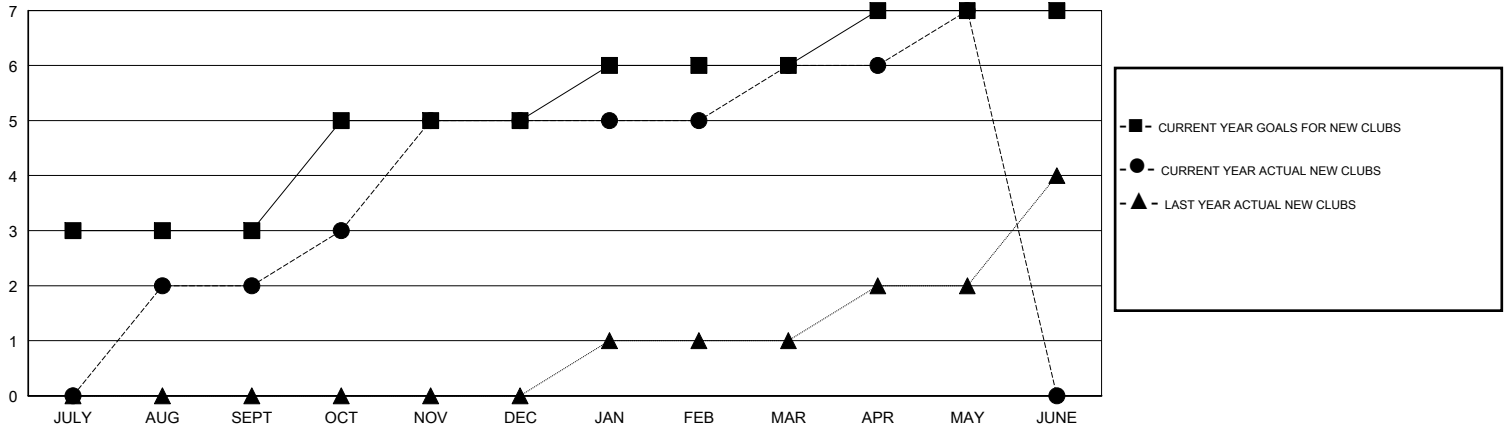
GMT: NAZMUL HAQUE

LOCATION INDIA

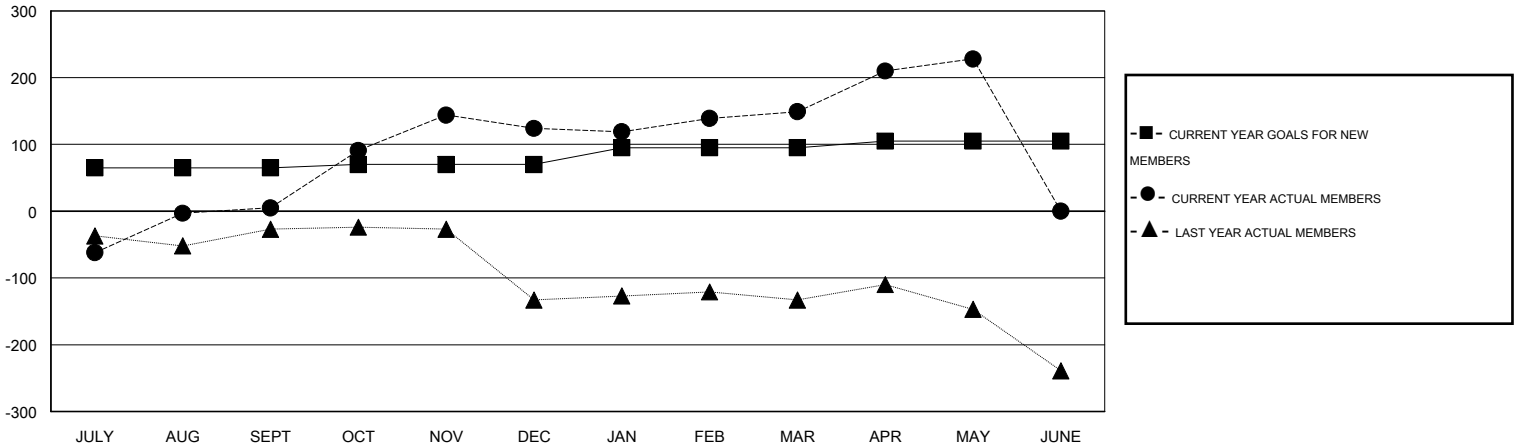
GMT CA 6

Clubs					Members				
RESULTS FOR 2014-2015					RESULTS FOR 2014-2015				
QUARTER	NEW CLUB GOAL	NEW CLUBS	DROPPED CLUBS	NET GAIN/LOSS	QUARTER	NEW MEMBER GOAL	CHARTER AND NEW MEMBERS ADDED	DROPPED MEMBERS	NET GAIN/LOSS
JULY/AUG/SEPT	3	2	0	2	JULY/AUG/SEPT	65	98	93	5
OCT/NOV/DEC	2	3	1	2	OCT/NOV/DEC	5	164	45	119
JAN/FEB/MAR	1	1	1	0	JAN/FEB/MAR	25	59	34	25
APR/MAY/JUNE	1	1	0	1	APR/MAY/JUNE	10	106	27	79

GOALS AND ACTUAL NEW CLUBS CUMULATIVE



GOALS AND ACTUAL MEMBERS CUMULATIVE



DROPPED CLUBS: 2	64 CLUBS OF 93 ADDED 1 OR MORE NEW MEMBERS	<u>GENDER DISTRIBUTION</u>	
		MALE	2,198 (77.26%)
<u>DROPPED MEMBERS</u>		FEMALE	647 (22.74%)
DECEASED	7	<a href="#">CLICK HERE FOR HEALTH ASSESSMENT DATA</a>	
CLUB CANCELLED	17		
OTHER	175		
TOTAL	199	FAMILY UNIT MEMBERS	1,281
		HEAD OF HOUSEHOLD	559
		NON-HEAD OF HOUSEHOLD	722